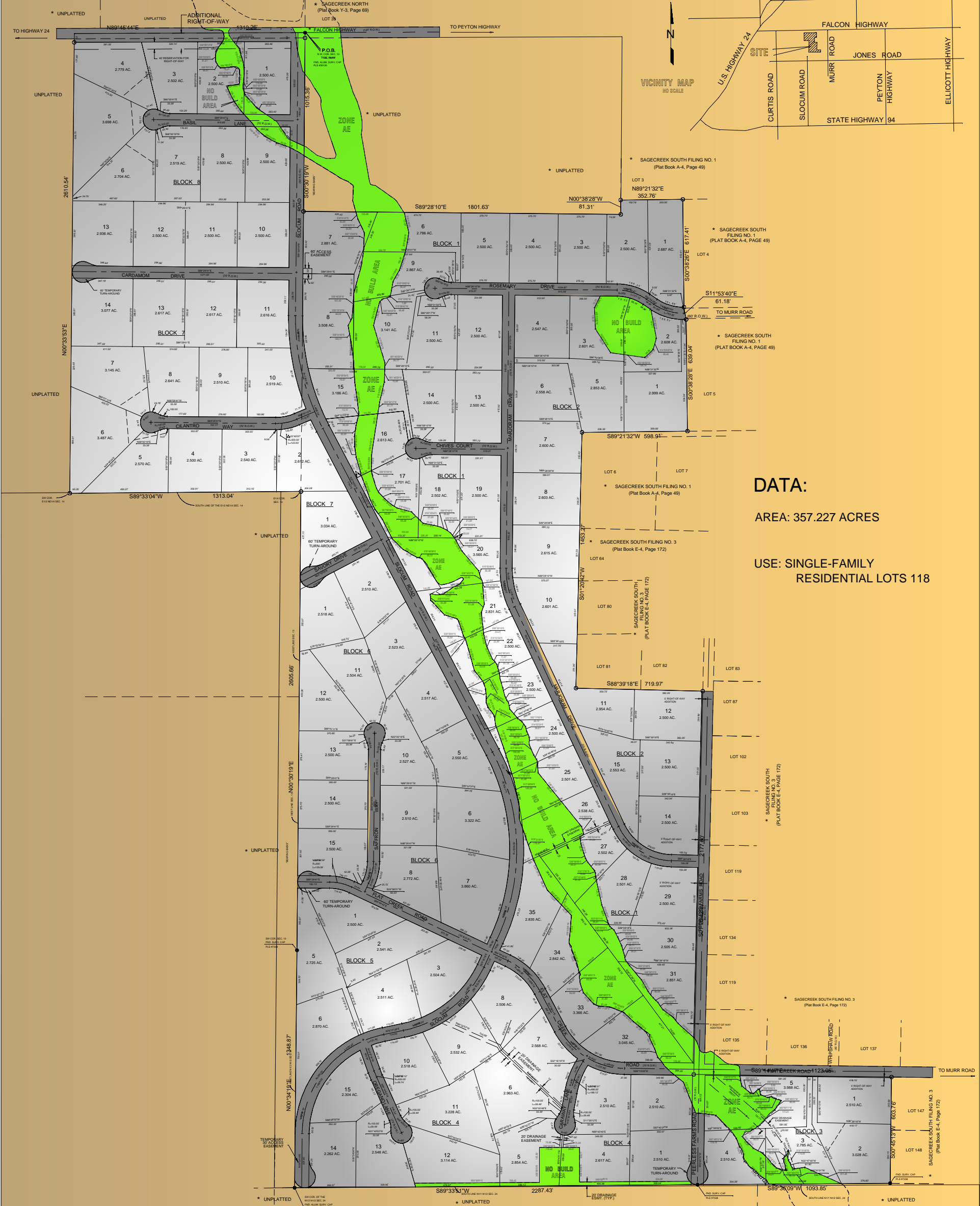


A PLANNED COMMUNITY

SAGE CREEK FILING NO. 2

EL PASO COUNTY, COLORADO

CENTRAL WATER - 2.5 ACRE LOTS



DATA:

AREA: 357.227 ACRES

USE: SINGLE-FAMILY
RESIDENTIAL LOTS 118

WINDMILL DEVELOPMENT, LLC

102 E. PIKES PEAK AVENUE, SUITE 200
COLORADO SPRINGS, COLORADO 80903
PHONE: (719) 633-2700

PREPARED BY:



Land Development Consultants, Inc.
PLANNING - ENGINEERING - SURVEYING
3898 MAIZELAND ROAD, COLORADO SPRINGS, CO 80909
PHONE: (719) 528-6133